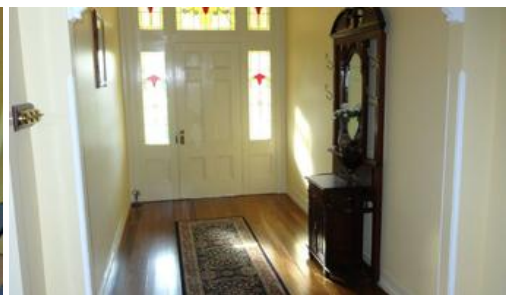




**52 Mary Street, Grafton**



## "Mae House"

Exquisite "Mae House", one of Grafton's beautiful period homes.

Superbly set amid delightful park like surrounds, "Mae House" is sited on one of Grafton's highest points.

An expansive residence fully renovated in sympathy with the period. Simply an absolute delight - a home that will embrace you with its charm and deliver total comfort for all the family.

Features include: a delightful foyer; the beautiful formal living room has an open fireplace; the adjoining formal dining room can be opened fully to the front verandah ; a charming sitting room with study takes a lovely garden view and has verandah access; the remarkable timber kitchen is well equipped with electric and fuel stoves, a dishwasher plus extensive bench-top space; there is an adjoining breakfast dining room; 4-bedrooms, the main bedroom has a new en-suite; bedroom 2 includes a sitting room alcove; all bedrooms have built-in robes; the bathroom is superb and is equipped with claw foot bath and separate shower; there is a third toilet with the laundry; the wine

4 2 3

<b>Price</b>	SOLD
<b>Property Type</b>	residential
<b>Property ID</b>	286
<b>Land Area</b>	2,723 m2

### Agent Details

Stephen Ebeling - 0437 209 147

### Office Details

Grafton  
PO Box 86 Grafton NSW 2460  
Australia  
0437 209 147

*Stephen Ebeling* **Freelance Realty**

The above information provided has been furnished to us by the vendor/s. We have not verified whether or not that information is accurate and do not have any belief in one way or the other in its accuracy. We do not accept any responsibility to any person for its accuracy and do no more than pass it on. All interested parties should make and rely upon their own inquiries in order to determine whether or not this information is in fact accurate.